

Nocturn Video Mixer for BoinxTV

Version 1.0 (for BoinxTV 1.1 or later) - January 26th, 2009

Summary

This tutorial helps you to setup all required components to use the Novation Nocturn controller in combination with the Nocturn Video Mixer layer in BoinxTV.

Novation Nocturn is a “intelligent plug-in controller” that uses a software called “Auto-mapServer” to provide a MIDI controller to Mac OS X.



If you have never used and set up the Nocturn before, the process may seem a little cumbersome. Rest assured that steps 1 though 8 below only need to be carried out once.

Disclaimer: Boinx Software is not responsible for any third party hardware or software like the Nocturn MIDI controller by Novation.

Table of Contents

1. Prerequisites
2. Install AutomapServer
3. Start the "AutomapServer" application
4. Connect the Nocturn
5. Setup AutomapServer
6. Setup Nocturn to work with BoinxTV
7. Install Nocturn Video Mixer layer in BoinxTV
8. Test the Nocturn Video Mixer layer
9. Layer Operation
10. Feedback

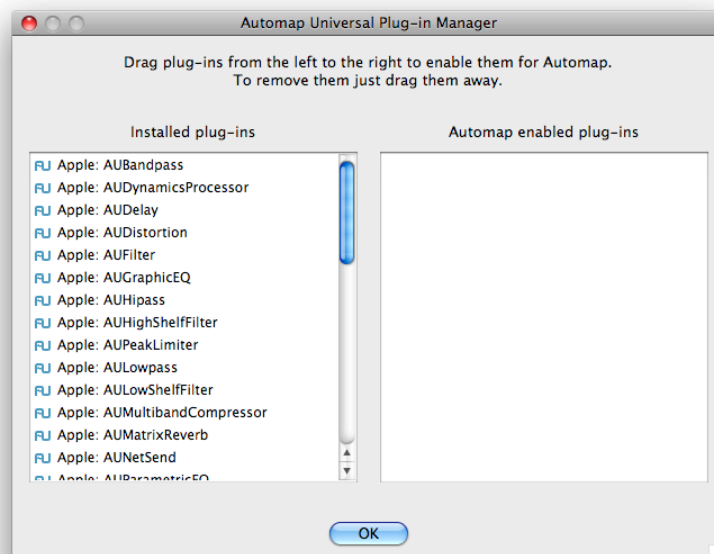
1. Prerequisites

You need the following components before starting:

- Boinx Software's BoinxTV version 1.1 or later. This tutorial is based on version 1.1. Get it from [Boinx Software downloads](#).
- Novation's Nocturn MIDI Controller. See web links in the package for purchase options.
- The AutomapServer software from Novation. This package is required to interface with the Nocturn.

2. Install AutomapServer

- The Novation Nocturn comes with an Installer CD containing the Automap Universal installer package. Novation recommends that you download the latest version of Automap from their website. Get the latest version from [Novation support](#).
- This guide was written based on AutomapServer version 2.1.1234.6.
- Double click the package icon and follow the instructions to install the software.
- During the installation process you will be asked to install pugins to Automap. You don't need any of them for BoinxTV but feel free to use them in other applications.

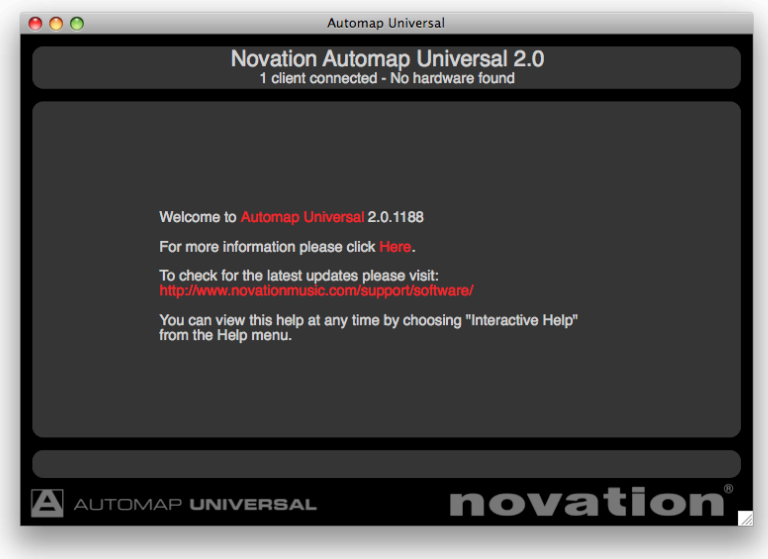


3. Start the "AutomapServer" application

- The application "AutomapServer" can be found in your "Applications" folder.
- In some cases you will be asked to update the shared memory settings of your computer. Follow the instructions by Novation.



- A window titled "Automap Universal" will pop up that shows the state of AutomapServer. If you have not yet connected the Nocturn it says "No hardware found" towards the top of the window.



4. Connect the Nocturn

- Use the provided USB cable to connect the Nocturn controller to a free USB port of your Mac.
- The AutomapServer application should notice your hardware device by updating it's status:. It now says "Nocturn connected".

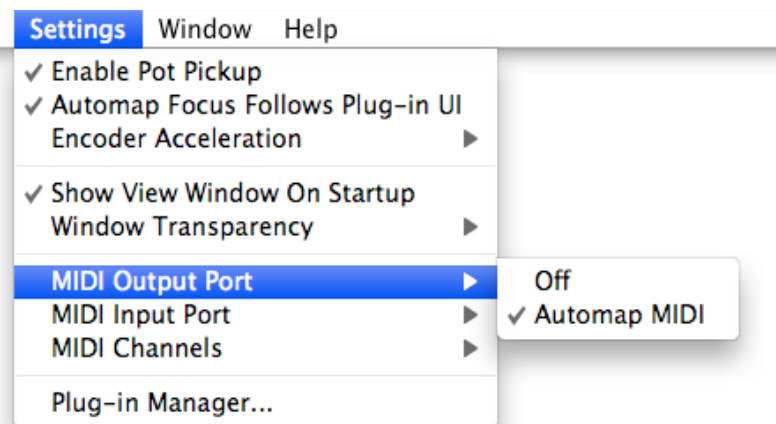
Novation Automap Universal 2.0

No clients connected - Nocturn connected

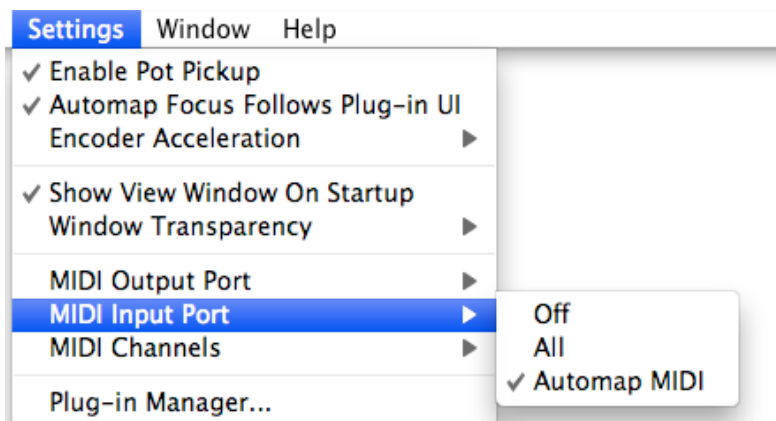
- If your device does not show up restart the AutomapServer application.

5. Setup AutomapServer

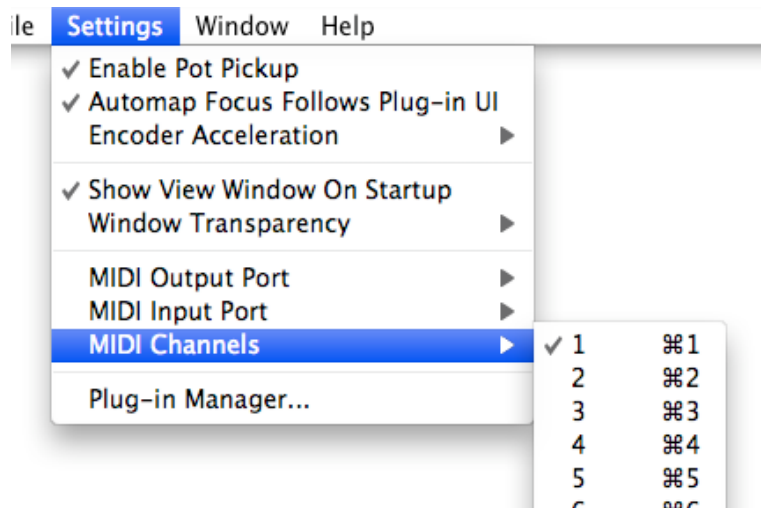
- AutomapServer needs to be told how to interact with the device and the MIDI subsystem of Mac OS X.
- Make sure that "Automap MIDI" is checked in Settings > MIDI Output Port.



- Also make sure that "Automap MIDI" is checked in Settings > MIDI Input Port.



- Finally, channel "1" should be selected in Settings > MIDI Channels.



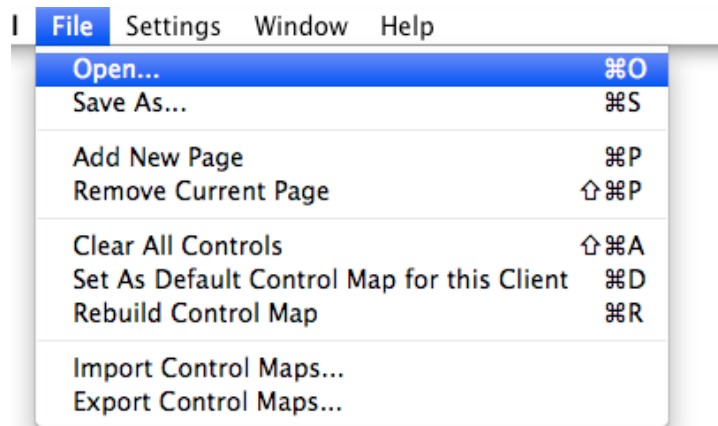
- If the AutomapServer window does not look similar to the screenshot below, press the "user" button in the lower right row on the Nocturn controller itself. After one or two presses it should look somewhat similar.



6. Setup Nocturn to work with BoinxTV

- Load the file "BoinxTV Nocturn.automap" provided with the Nocturn Video Mixer package using the File > Open... command in AutomapServer.



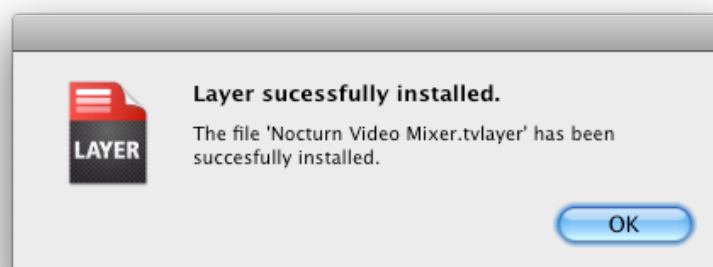


- If you want to see whether everything worked fine, double click on the CC#8-control in the AutomapServer window. The "Step:" value should be set to "0".



7. Install Nocturn Video Mixer layer in BoinxTV

- Now start BoinxTV, at least version 1.1. Do not yet create a document.
- Double click the file “Nocturn Video Mixer.tvlayer” provided with the Nocturn Video Mixer package. A dialog should inform you that the layer has been installed into BoinxTV.



8. Test the Nocturn Video Mixer layer


- Create a document using the "Blank" template.
- Open the Layer Repository at the bottom of the document window by clicking the “Layers” button in the bottom left of the window.
- Click the “Multivideo” button in the Categories area on the left.

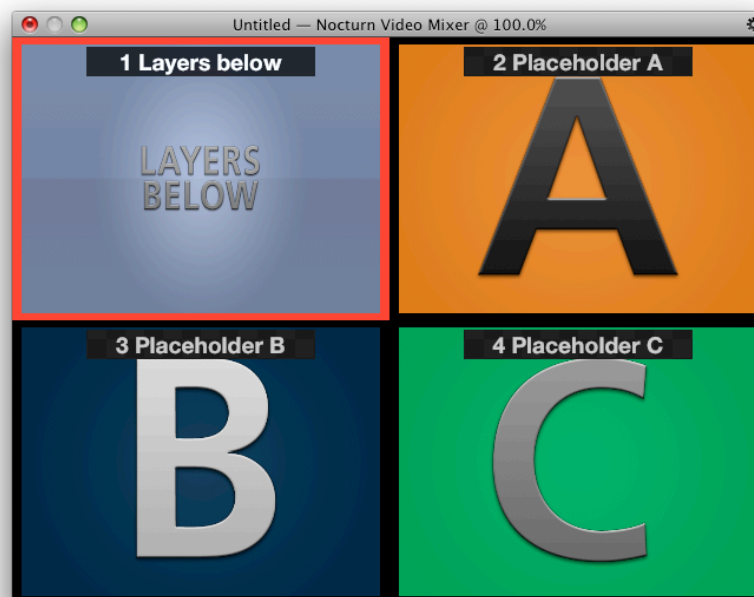
- A layer called “Nocturn Video Mixer” should now be visible in the Layers area in the middle.
- Drag this layer to the top or double click it. Click the LIVE button. Your document should now look like this:



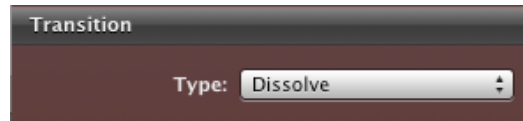
- If all four red lamps on the right side of the Nocturn are blinking from right to left you need to move the big slider on the Nocturn all the way to the left. This is the required initial position.
- Now the rightmost three red lamps should blink at the same time.
- Choose one of the sources “A”, “B” or “C” by clicking on one of those lamps.
- That lamp should now be constant red.
- You can now mix between “Layers below” and the chosen source “A”, “B” or “C” by using the slider on the Nocturn.

9. Layer Operation

- As usual in BoinxTV, setup the sources in the Content area of the layer. You can use any combination of camera, movie or image inputs for the Nocturn Video Mixer layer.
- Give your sources custom names for easier orientation.
- Open the layer preview in a separate window (using the button on the top right of the preview area ) for better overview.
- The currently dominant source draws a red border to indicate it's live status.



- In order to change the transition from “Dissolve” to something else, select the “Nocturn Video Mixer” layer in BoinxTV, scroll to the “Transition” section in the left column and choose your desired transition next to Type.



- On the Nocturn itself use the slider to mix between the two sources selected on the Nocturn.
- If you want to change on of the sources, the slider needs to be at the opposite end. Otherwise you would switch the source while it is visible on screen. Red blinking lamps indicate sources that can be chosen, solid red lamps indicate the current selection.

10. Feedback

Please send us your feedback and impressions when using the Nocturn Video Mixer layer. Simply choose BoinxTV > Provide Feedback... from the menu and tell us what you think.